

ARTMOMENTS

Yesterday Since Tomorrow

G13 GALLERY

Preview Link:

<https://g13gallery.com/preview/art-moments-jakarta/>



G13 Gallery identifies and collaborates with the artists that show potential, relevance, and depth in their works. The gallery aspires to develop synergy between artists domestically and internationally, and it achieves this through cross-border collaborations, residences, and exhibitions.

G13 Gallery aims to realize a greater appreciation for Asian art, has been actively participating in multiple regional art fairs over the past few years.

GALLERY VIEW





G13 GALLERY

MOCHTAR SARMAN

SITTIPHON LOCHAI SONG



MOCHTAR SARMAN



General

170x120cm

Mixed Media on Canvas with ChromadePTH 3D effects

2020



Musashi Victory

170x120cm

Mixed Media on Canvas with Chromadepth 3D effects

2020



Victory

170x120cm

Mixed Media on Canvas with ChromadePTH 3D effects

2020



Maharana Pratap

170x120cm

Mixed Media on Canvas with Chromadepth 3D effects

2020



Sultan Suleyman's Victory

170x120cm

Mixed Media on Canvas with ChromadePTH 3D effects

2020

An Indonesian artist who has risen to the spotlight recently is Mochtar Sarman, who is famous for the combined concepts of traditional and futuristic art. This time Sarman introduces a series of his latest work depicts charismatic leaders who became heroes or legends, consisting of the famous Napoleon Bonaparte, Sultan Suleyman, Musashi, and Maharana Pratap that inspire generations for their leadership. Sarman uses the technique of industrial pop-style painting. This series of paintings, requires visitors to view through 3D-glasses that reflect the creative characteristic of the creator.

Consisting of his works, the painting series is a reproduction of classical paintings that he revived with his style and urban elements. All of these painting, he modified with his style, including incorporating modern elements such as replacing the general boots with Air Jordan 1 shoes. Do not forget to also apply three-dimensional effects to provide a different visual experience for visitors and collectors.

This approach is to make audiences and lovers of young art more easily related to his work. To him, it is also a way of introducing classical works with modern glasses as well as a form of reverence for other classical works.



SITTIPHON LOCHAI SONG



Moist

120x100cm

Tempera Powder on Canvas

2018

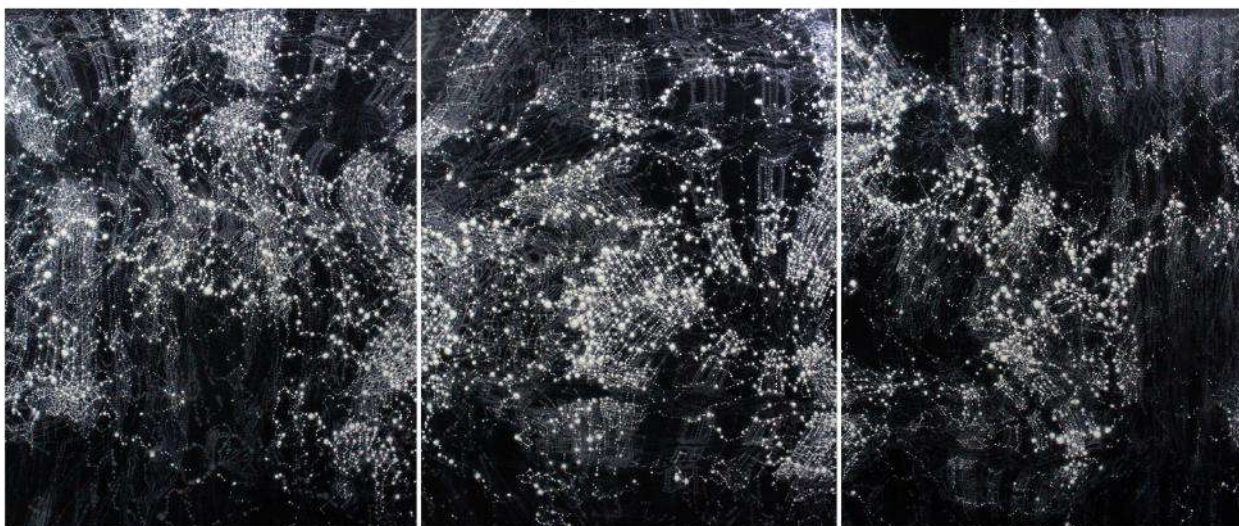


Exhale

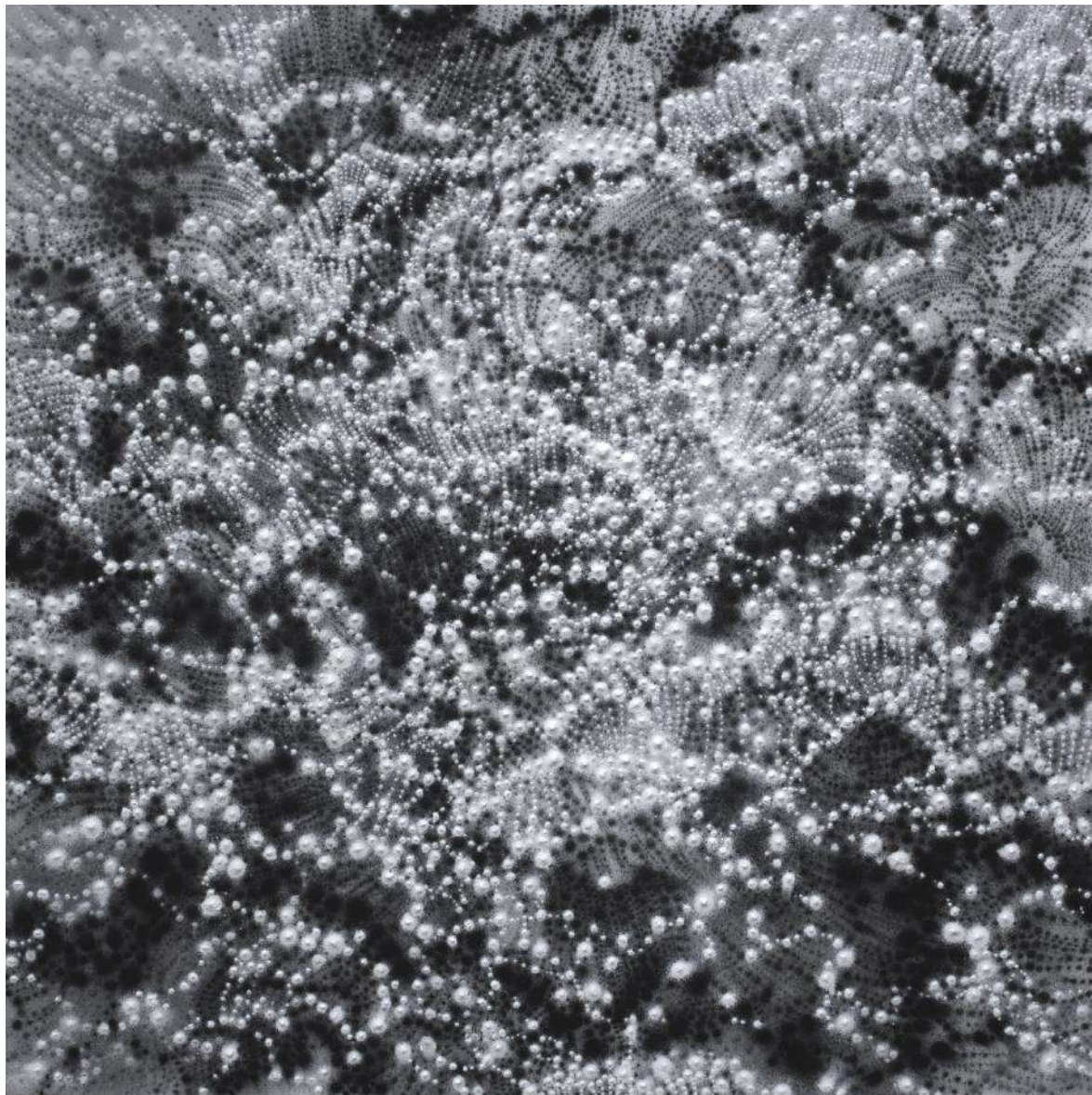
120x100cm

Tempera Powder on Canvas

2018



Once Upon A Time
190x150cm
Tempera Powder on Canvas
2018

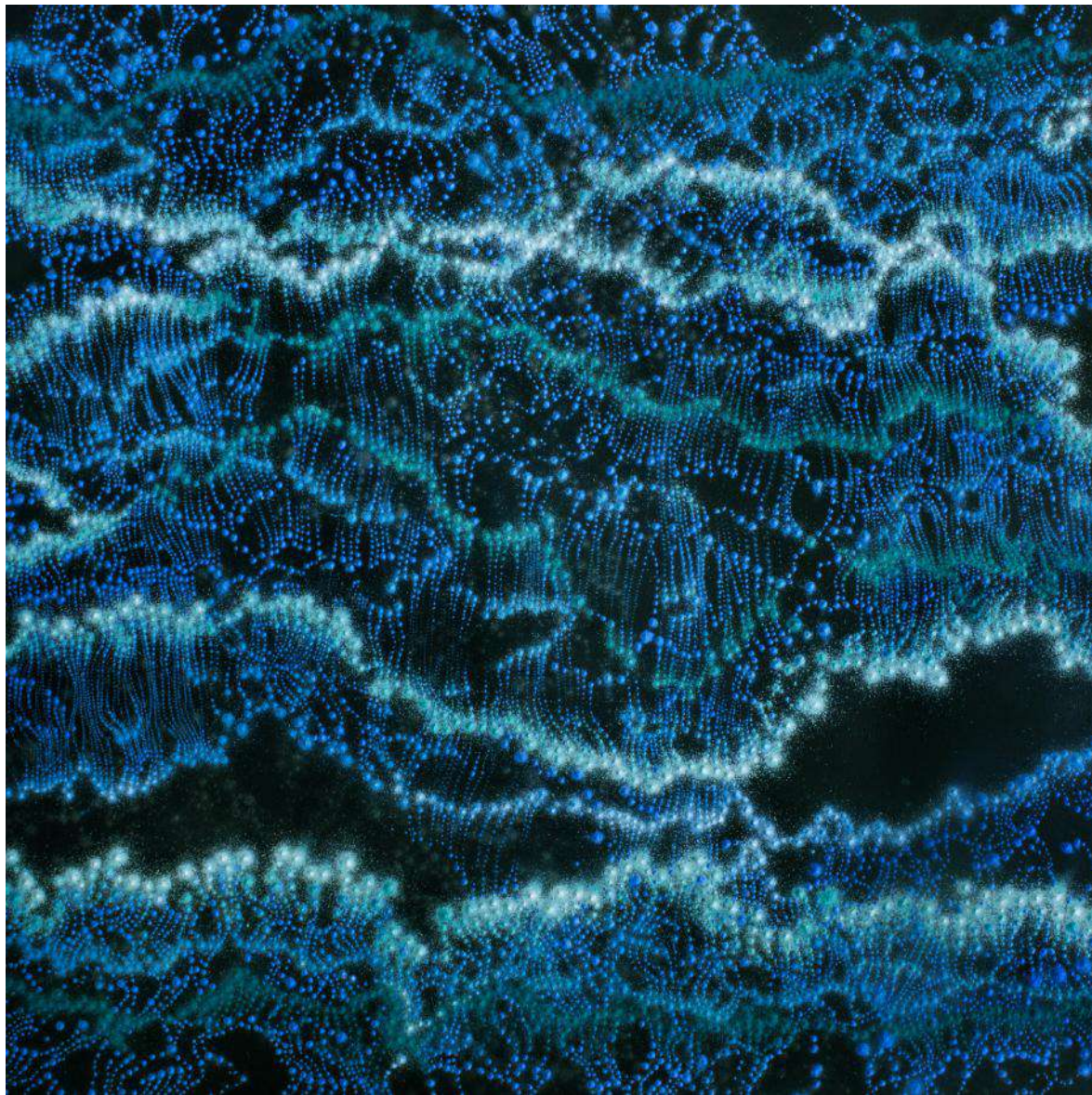


Entering

150x150cm

Tempera Powder on Canvas

2020

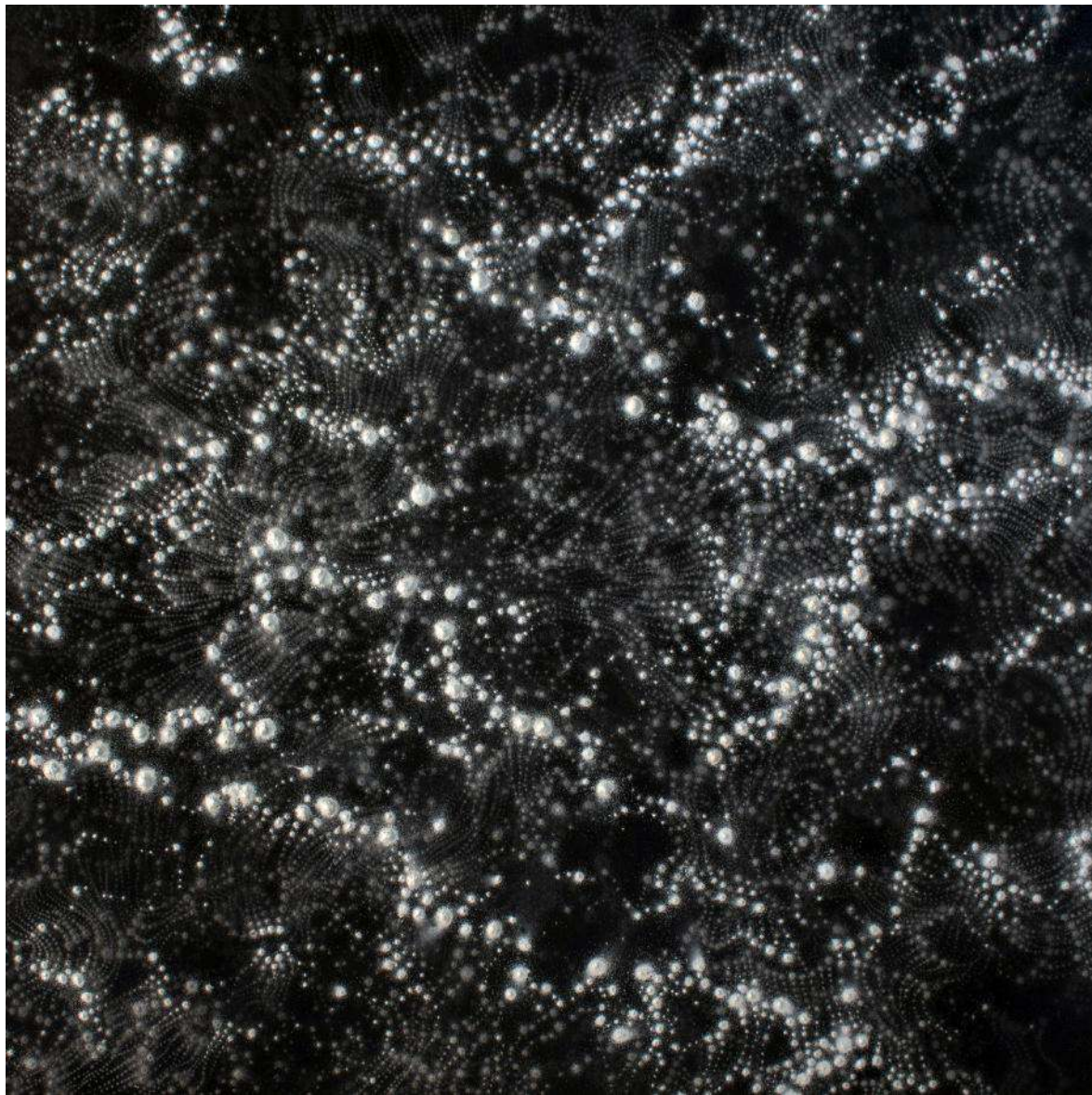


Healing

150x150cm

Tempera Powder on Canvas

2020



Restarting

150x150cm

Tempera Powder on Canvas

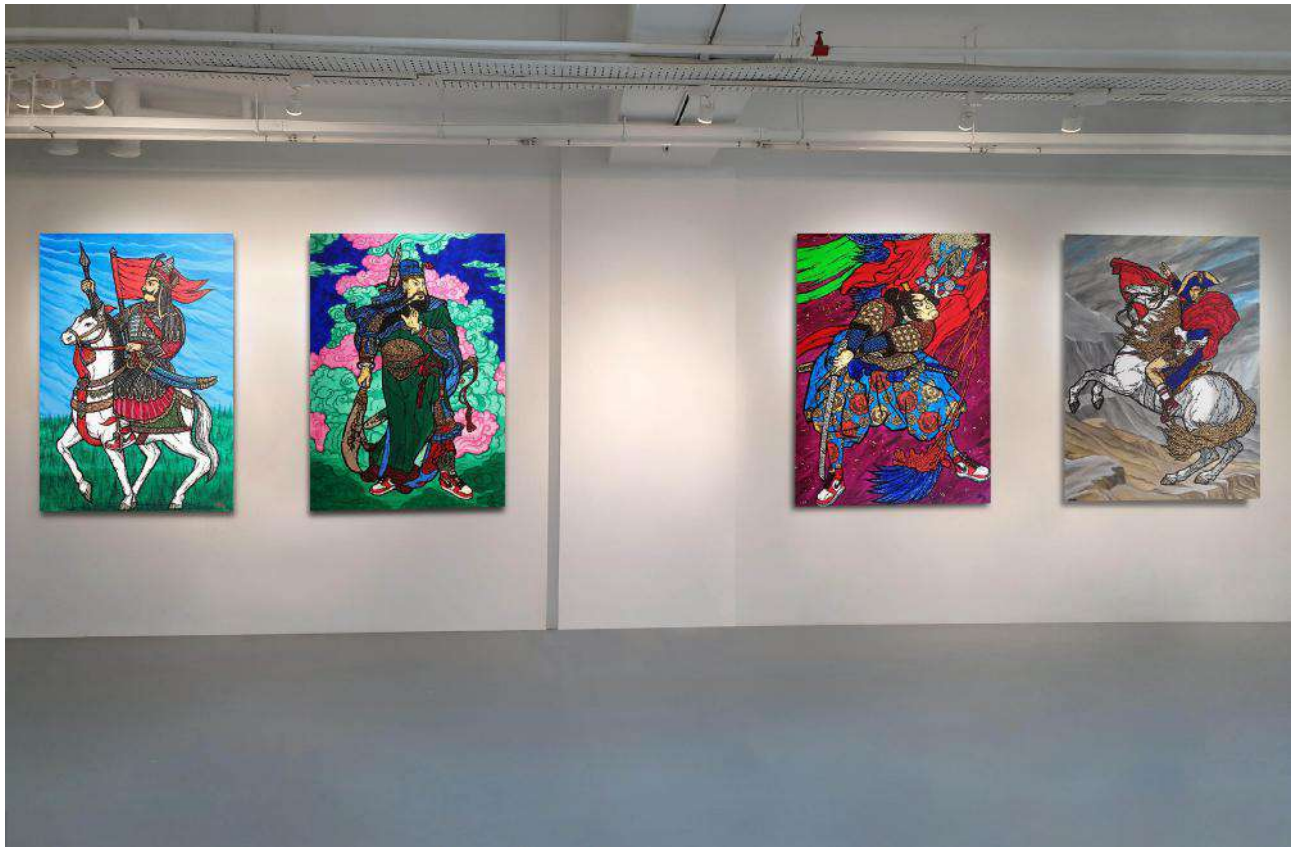
2020

Clear and unclear points are joined and assembled. Points, figures and symbols meet imagination and sensation to express the essence of mind. The roughness and delicacy reflect the complicated mind which embeds both extremes: goodness and badness without a cause. They portray moral principles that motivate one to realize his state of mind: the consciousness perceives the unstoppable movement of the abstract nature of time, causing the mind to concentrate, understand the truths, and realize the nature of good and bad. Such experiences are compared as the movement of time which our senses could touch and feel. Consequently, the characteristics of time are depended on the state of mind.

A series of mesmerizing artworks representing the epitome of the stellar spaces accomplished by Lochaisong, with the aim that the viewers are immersed in it. The ambiguous dots of stars varying in their size and luminosity were created and joined in his artworks, which connote the sense of embracement of the complexity and the extreme nature of being. The works of Lochaisong also indicate the mysterious nature of existence, including the experience of life and death, the reality of good and bad, and the occurrences of the certain and the uncertain, some of which have become Lochaisong's aspiration in the creation of his paintings. Lochaisong hopes to inspire the viewers to reflect upon the creation and existence of humans in relation to those of other beings—a call that would propel us to embrace the inevitable evolution of the ever-expanding world.

INSTALLATION VIEW





Published in conjunction with the exhibition :

ART MOMENTS JAKARTA

CONTACT : KENNY TENG, DIRECTOR
HP/WHATAPPS : +60192114697

Publisher

G Thirteen Gallery Sdn Bhd (1183072H)

G13 Gallery, GL 13, Ground Floor, Block B, Jalan SS7/26, Kelana Square, 47301 Kelana Jaya, Selangor, Malaysia.

T: 03-7880 0991 | F: 03-7886 5755 | E: info@g13gallery.com W: g13gallery.com | FB: [facebook.com/G13gallery](https://www.facebook.com/G13gallery) | Design: Khair Abd Muin

Copyright © 2020 G Thirteen Gallery Sdn Bhd

All right reserved. No part of this publication may be reproduced or transmitted or published in any form or by any means, electronic or mechanical, including photocopy, recording or any information storage and retrieval system, without permission in writing from the copyright owner(s). The views expressed in this catalogue are not necessarily those of the publisher.



G13
gallery