

ISA Art Design



ARTMOMENTS
Yesterday Since Tomorrow

THROUGH THE MARKET'S EYES

FROM MODERN TO CONTEMPORARY

THROUGH THE MARKET'S EYES

Why the need to look into the secondary market?

In our Art Moments booth, we are presenting a selection of artworks from established Asian artists, from the modern to the contemporary era. Most of the works being offered are sourced from the secondary market, acquired through the close relationship between ISA Art & Design and collectors. The progression from Modern to Contemporary art in Asia should not be thought of with the same progression in the Western art world. The stylistic uniqueness of Modern and Contemporary art in Asia could be attributed to the history of colonialism, existing local wisdom, Asian aesthetic conventions, and modern-contemporary art as an adopted culture.

The movements that happened in the West, Bauhaus, Structuralism, Formalism, Feminism, Pop Art, Hyper-realism, Impressionism, also exists in the Asian Art Scene, but with a twist. Works from first generation modern artists such as A.D Pirous applies styles and qualities of Formalism but emphasis on Indonesian Islamic traditions. The non-representational character of Islamic art is applied wonderfully in the abstract paintings of Pirous. Arahmaiani looks to the unique pluralism of religions and cultures in Indonesia with her Jawi series of paintings. While at first glance the characters in her paintings may appear Islamic, it is actually based on “pegon” the ancient Javanese script derived from Sanskrit and ancient Javanese writings; looking back through the history of openness and cultural fluidity in Indonesia. Takashi Murakami's prints play a tribute to not only the pop art of the west, but also the effect of Japan economic bubble crisis and the Japanese pop culture. Instances of thoughtful adaptation, innovation, and hybridisation between the west and east are strongly evident in the works of other artists in our collection: Natee Utrait, Arie Smit, Sinta Tantra, Agus Suwage, and Mariam Sofrina.

Not all artworks that came out of an artist's studio stay relevant once the fad at the time it was created fades. The artworks present in this booth, having been collected previously, means it is a **pre-curated selection of the best of its era**, tested through time. Artworks that come out fresh from an artist studio, while they encompass the zeitgeist of its contemporary, might not be of a particular narrative you are looking for. Collectors often have themes or stories behind the art that they collect. If your concern is an issue that happened in the past few decades, or a particular older series of an artist, high chance that you could find a much more **accurate representation** in the secondary market. If you have a specific narrative you are going to build through your artworks, why should you limit yourself with just the first-hand market?

Buying from both first and second-hand market could also be a form of **longer-lasting support for an artist**. The success of an artist in the second-hand market shows that their artworks have a long-lasting value much more than just a momentary trend or a fad. Here in **ISA Art & Design**, we aim to provide **variation and flexibility** in your collecting needs. We become the mediator between collector, dealer, artist, and audiences to, first and foremost, support the appreciation of art on the broader public and to offer collectors the flexibility to build a collection that meets their taste and visual aesthetic.



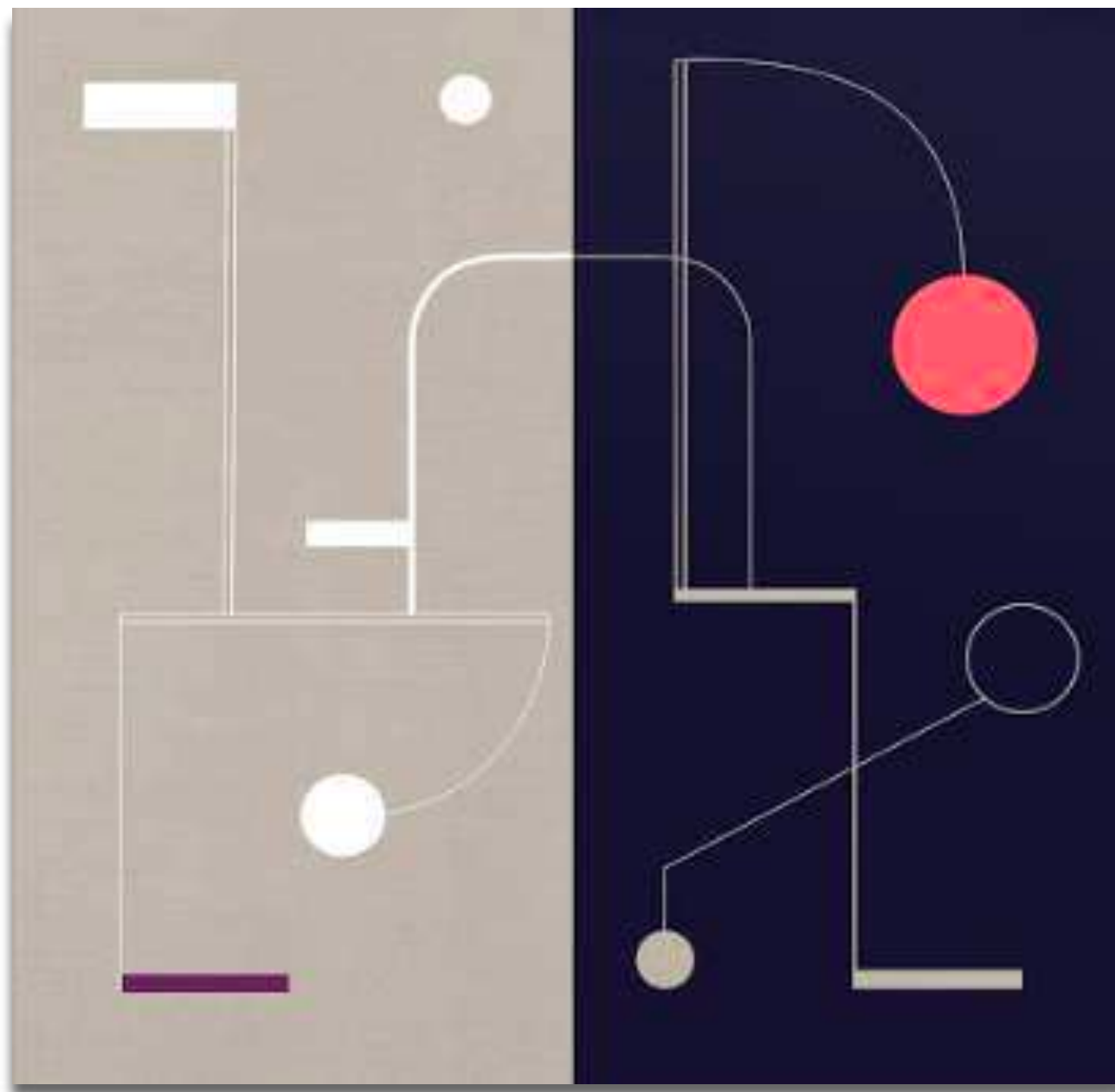
ARAHMAIANI

PELANGI 3&4 (DIPTYCH)

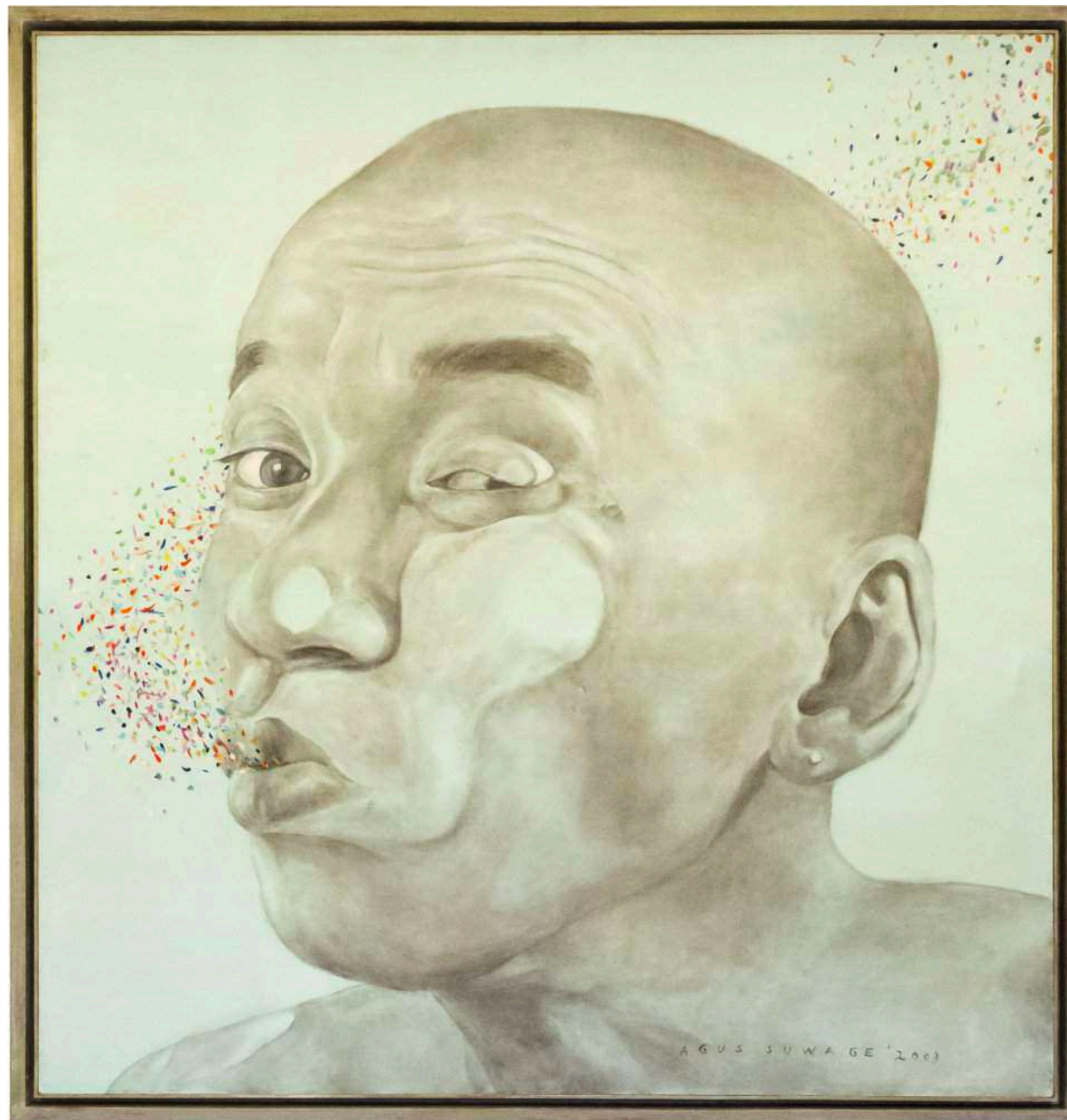
100 X 140CM (2 PANELS)

ACRYLIC ON CANVAS

2019



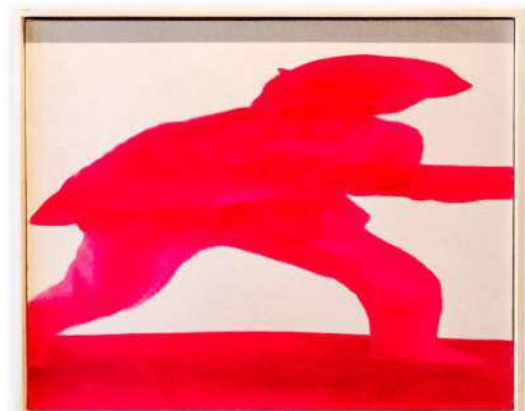
SINTA TANTRA
STAR CLOCK AT NIGHT II
180 X 180CM
TEMPERA ON LINEN
2018



AGUS SUWAGE
UNTITLED
150 X 140CM
ACRYLIC ON CANVAS
2003



MARIAM SOFRINA
SELF PORTRAIT WITH FRIEDRICH
185 X 130CM
OIL ON CANVAS
2011



NATEE UTARIT
UNTITLED
40 X 50CM (EACH)
OIL ON CANVAS
2006



CHINATSU BAN
THE SONG OF PASSING
248.6 X 333.4CM
ACRYLIC ON CANVAS
2006



A.D. PIROUS

ALAM BENDA (KERABAT BOTOL)

95 X 95CM

ACRYLIC ON CANVAS

2019



A.D. PIROUS
HAMPARAN HIJAU DI SISI LAUT
95 X 95CM
MIXED MEDIA ON CANVAS
2019



ARIE SMIT

HIBISCUS

54 X 59CM

ACRYLIC ON CANVAS

1991



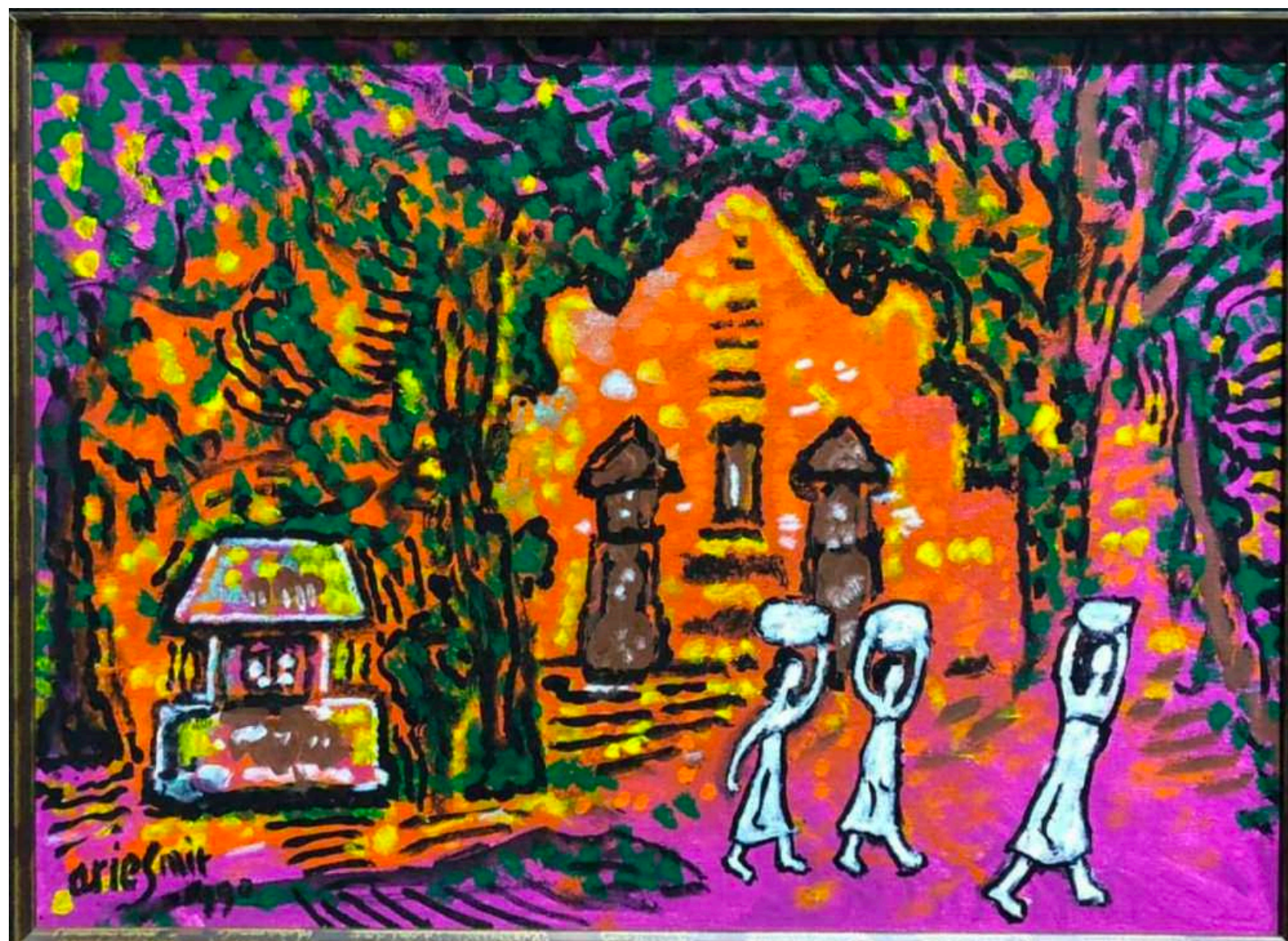
ARIE SMIT

FLOWERS

29 X 32CM

ACRYLIC ON CANVAS

2006



ARIE SMIT
IN A BALI VILLAGE (THREE VILLAGERS)
28.5 X 31.5CM
ACRYLIC ON CANVAS
1990



TAKASHI MURAKAMI
FLOWERS FOR ALGERNON
 71 X 71 CM (EDITION OF 300)
 OFFSET LITHOGRAPH
 2010



TAKASHI MURAKAMI
NIRVANA
 131.4 X 65.7 CM
 OFFSET PRINTS WITH SILVER
 2008



TAKASHI MURAKAMI
AND THEN, AND THEN, AND THEN (RUST RED I)
 50 X 50CM
 OFFSET LITHOGRAPH
 2006



TAKASHI MURAKAMI
AND THEN, AND THEN, AND THEN (BLUE)
 50 X 50CM
 OFFSET LITHOGRAPH
 2006



TAKASHI MURAKAMI
ME AND KAIKAI AND KIKI

68 X 68CM

OFFSET LITHOGRAPH
 2009



TAKASHI MURAKAMI
ME AND MR. DOB

50.8 X 50.8CM

OFFSET LITHOGRAPH IN COLOURS, WITH COLD STAMP AND HIGH GLOSS
 VARNISHING, ON SMOOTH WOVE PAPER
 2010

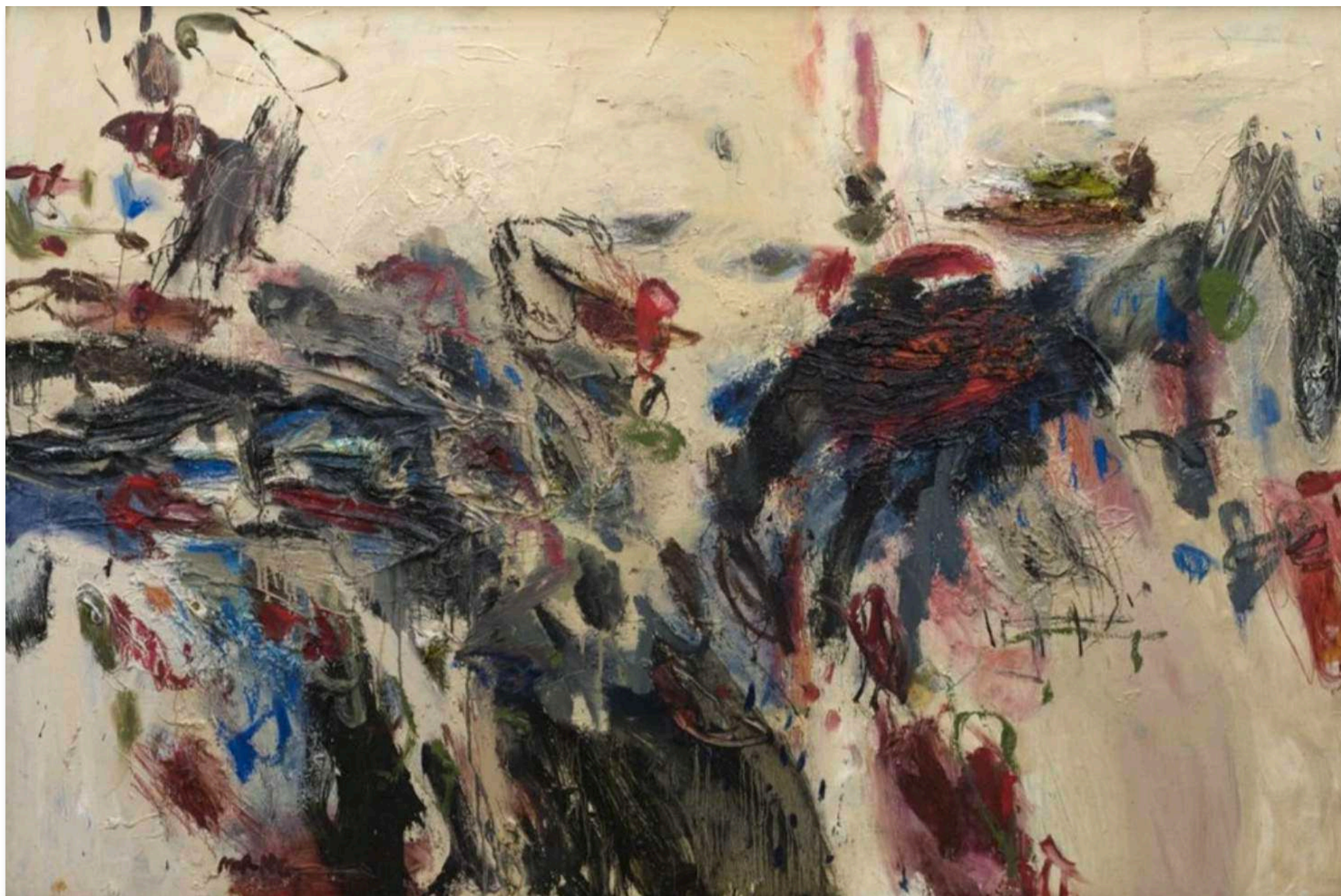


TAKASHI MURAKAMI
KANSAI PLATINUM
 72 X 76.25CM
 OFFSET LITHOGRAPH
 2009



TAKASHI MURAKAMI
SUCH CUTE FLOWERS
 50.8 X 50.8CM
 OFFSET LITHOGRAPH WITH COLD STAMPING
 2011

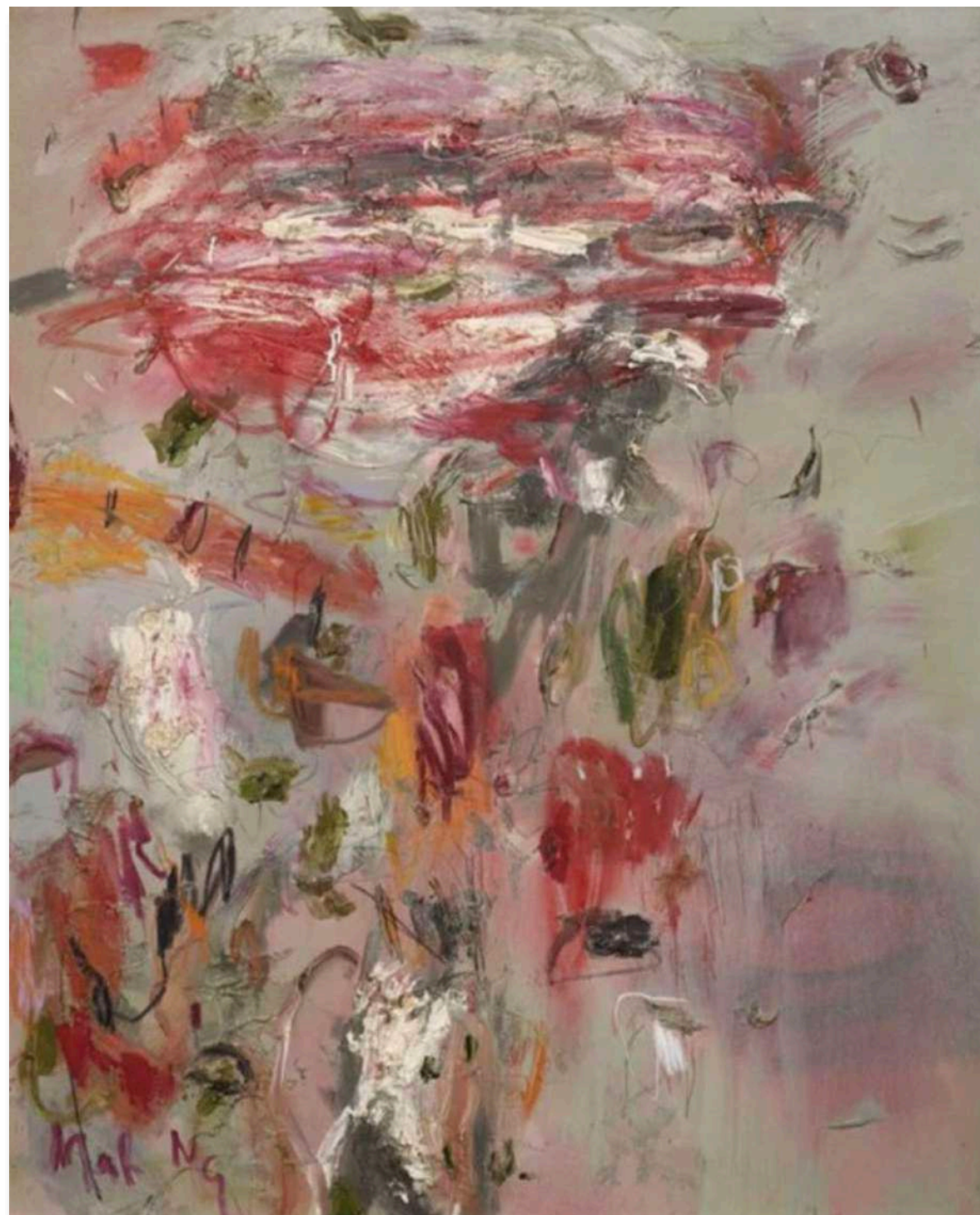
MALAYSIAN ABSTRACT EXPRESSIONISM



MARISA NG
FERTILE MIND
122 X 183CM
MIXED MEDIA ON CANVAS
2018



MARISA NG
CHILDHOOD MEMORIES
80 X 80CM
MIXED MEDIA ON CANVAS
2017

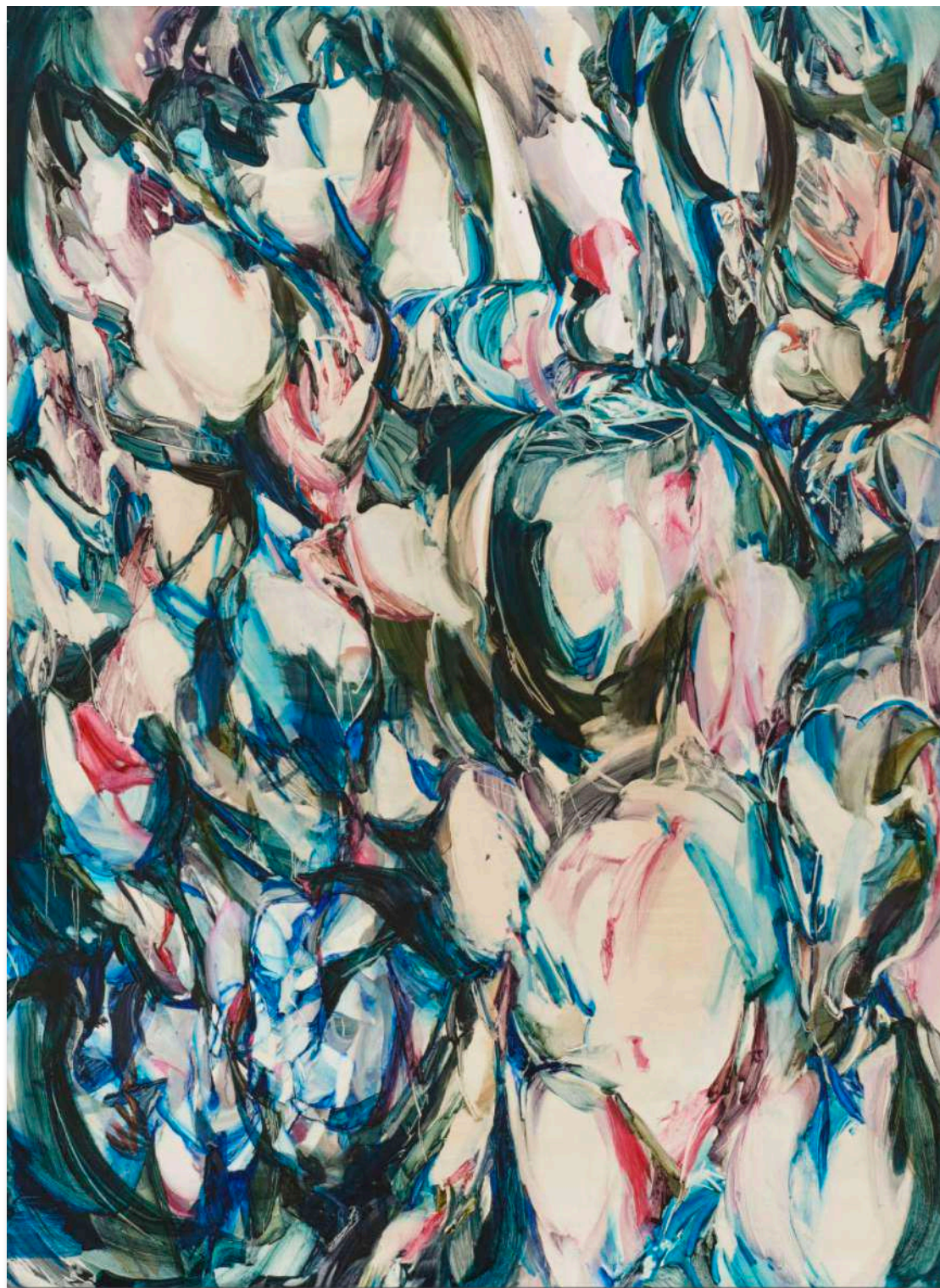


MARISA NG
DANCING FLOWERS
122X 152CM
MIXED MEDIA ON CANVAS
2018



MARISA NG
TRUTH IN LOVE
152X 152CM
MIXED MEDIA ON CANVAS
2019

EMERGING FEMALE ARTISTS



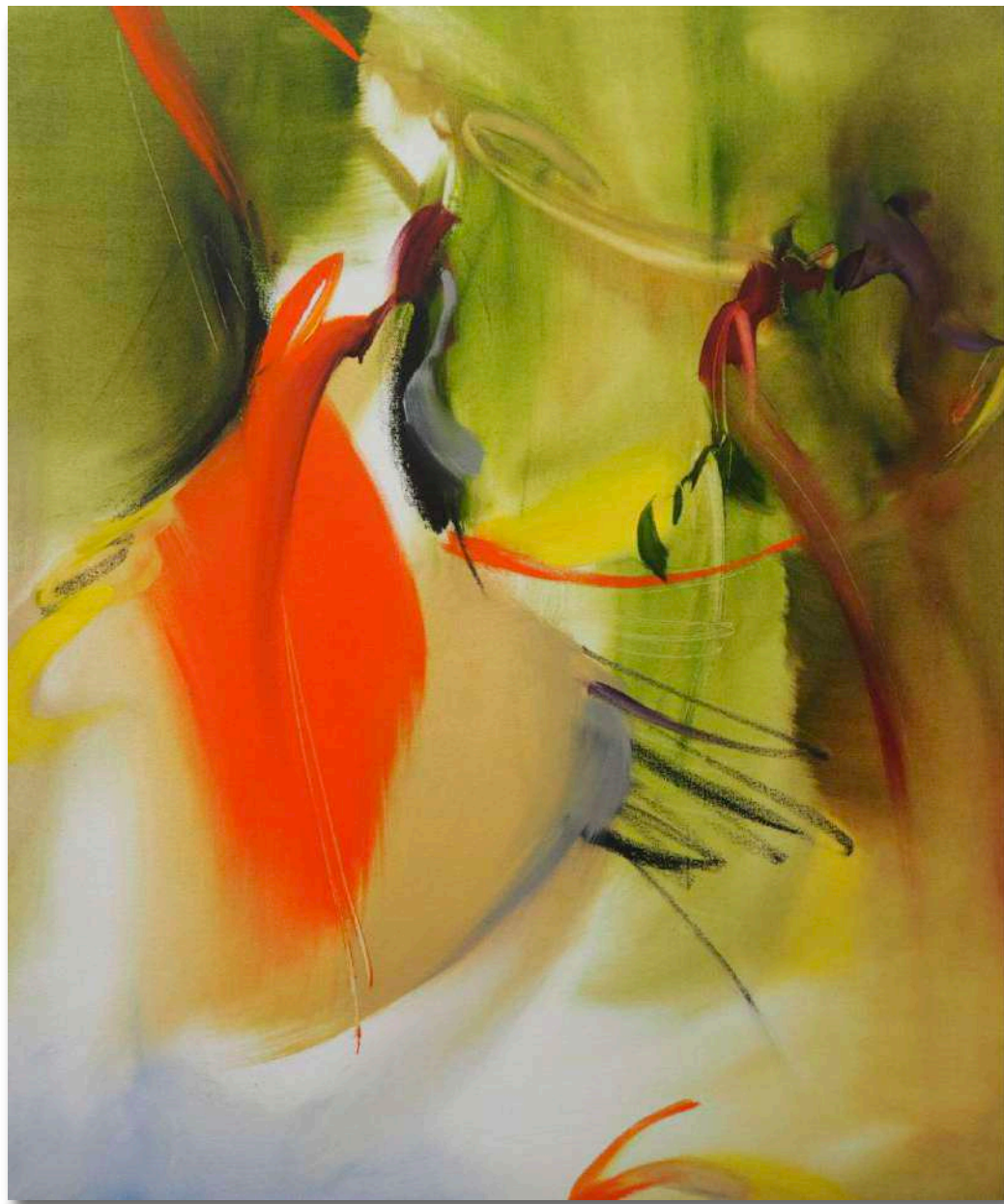
HANNAH SHIN

FLUIDITY OF RADIANCE

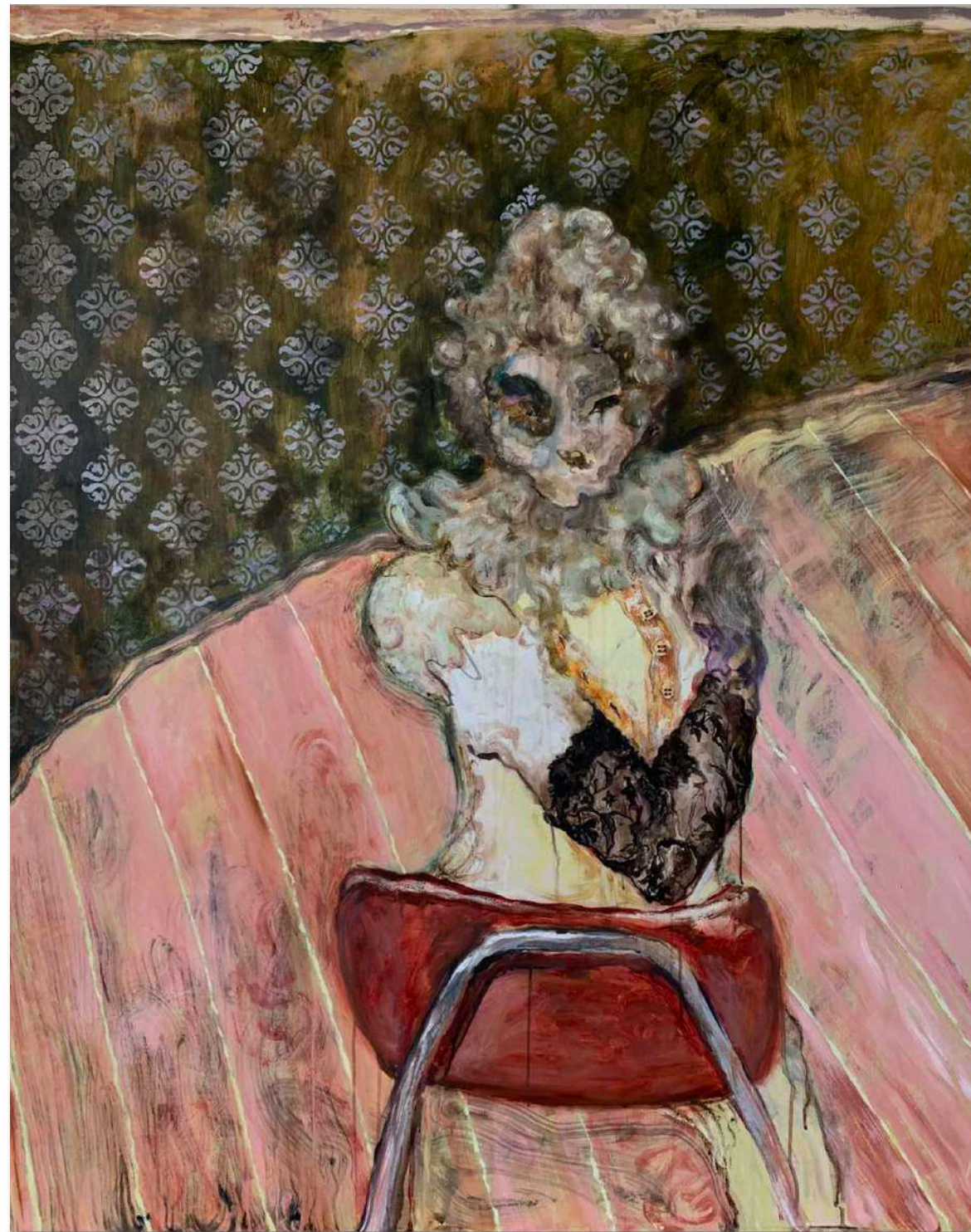
190X 140CM

OIL ON CANVAS

2018



HANNAH SHIN
FLOURISHING #2
120 X 100CM
OIL ON CANVAS
2020



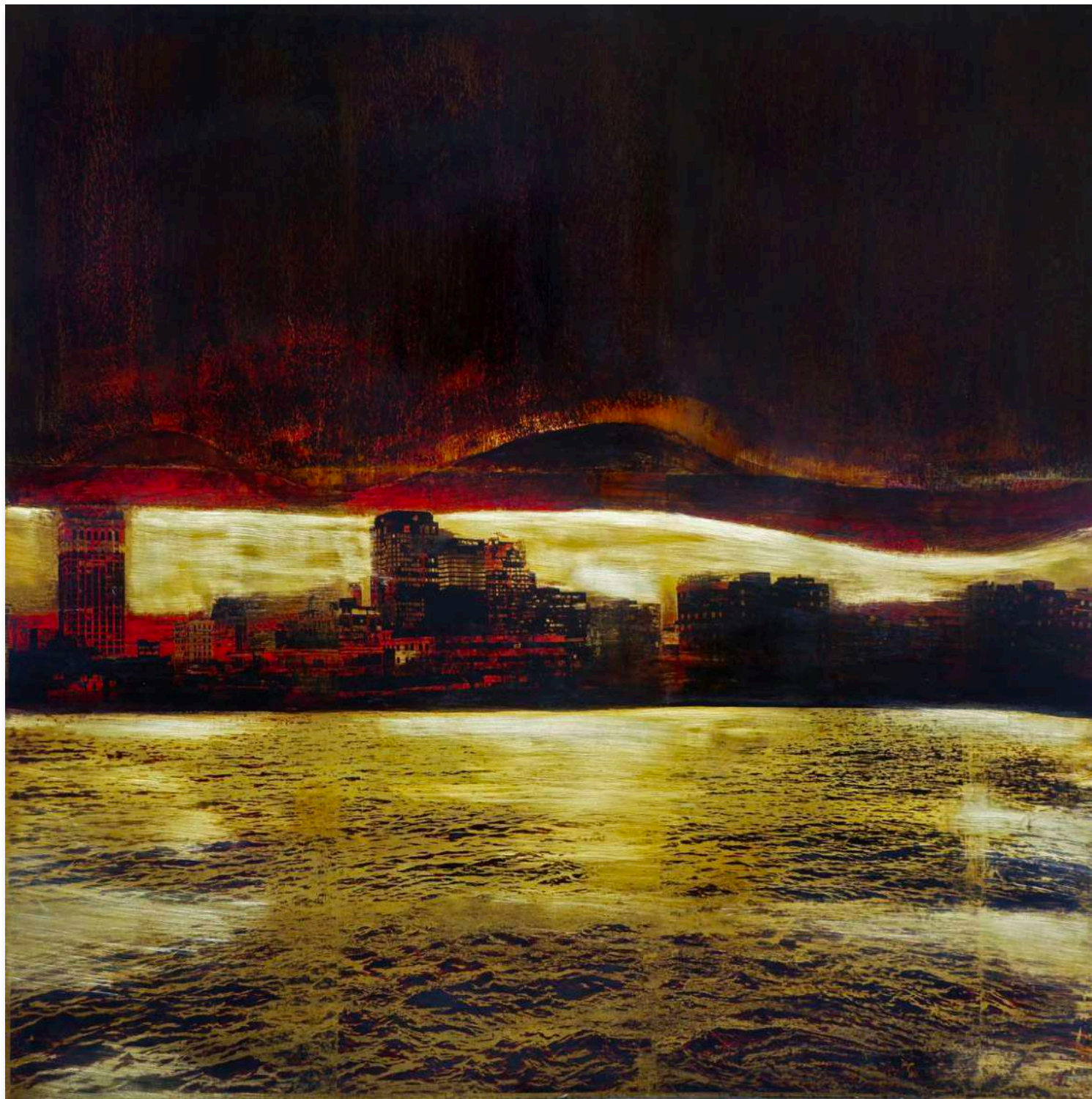
AISHA ROSLI

WEAR ME DOWN

122 X 152CM

MIXED MEDIA ON CANVAS

2020



ETZA MEISYARA

ETERNAL DUALITY

100 X 100CM

PHOTO ETCHING, SULPHUR ON BRASS PLATE

2020



AUDYA AMALIA

DE NJAI: OMA PET

106 X 62 X 67CM (EDITION 2/4)

RESIN

2020



IDA LAWRENCE

DIMAS'S WIFI TOWER

152 X 183CM

ACRYLIC ON CANVAS

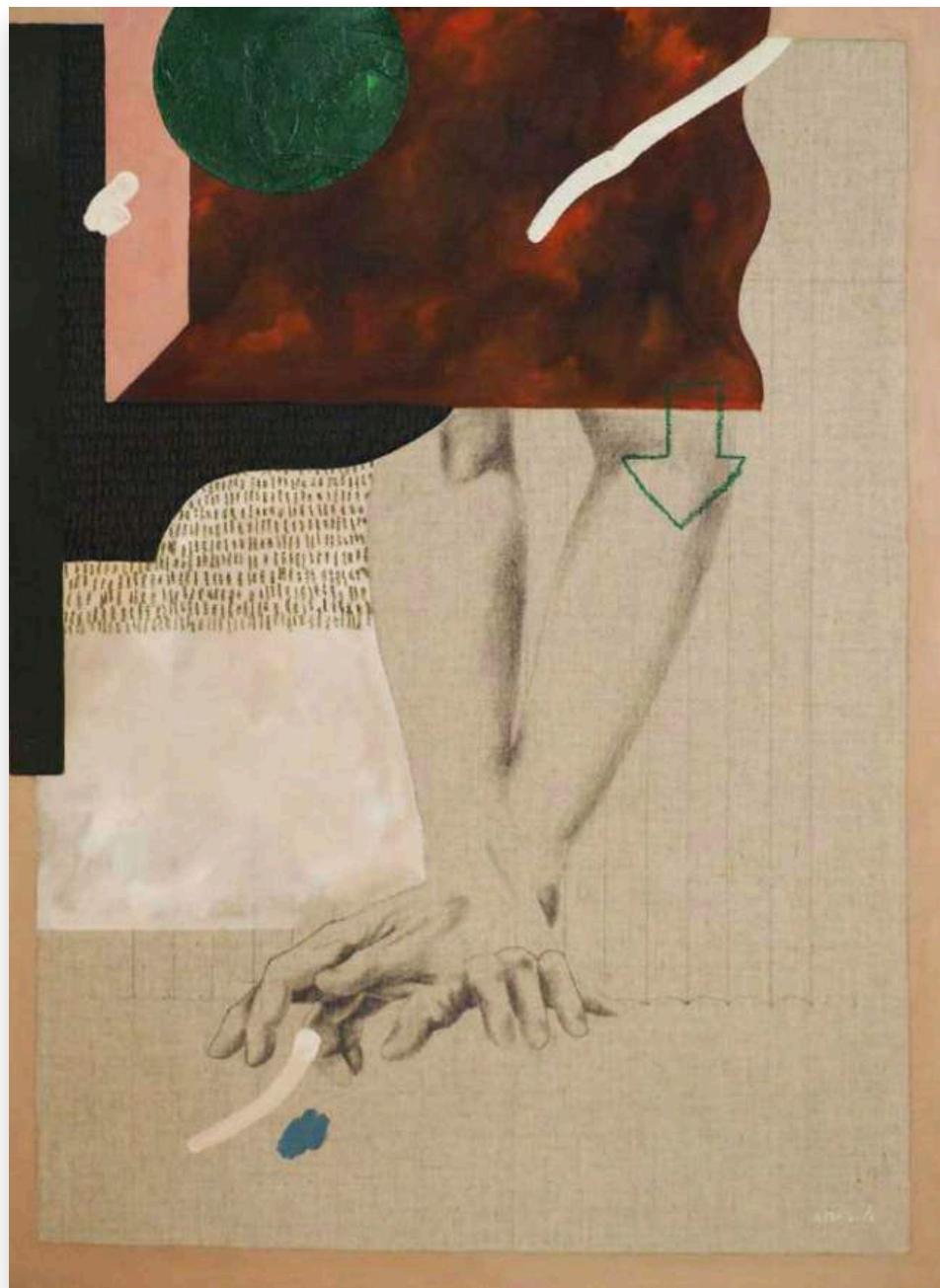
2018



ANASTASIA ASTIKA
ANAMESIS: FAR CRY III
 75 X 75CM
 CHINESE INK ON PAPER
 2020



MELTA DESYKA
KERIKIL
 42 X 42CM (9 PANELS)
 HAND EMBROIDERY ON CANVAS
 2019



INES KATAMSO

LOURDEUR

105 X 74CM

OIL PAINTING AND PASTEL ON LINEN

2018



REGA AYUNDYA PUTRI

CLOUDBURST #2

40 X 60CM

ACRYLIC PAINT AND DIGITAL PRINT ON ACRYLIC

2020



RUTH MARBUN

INTERUPSI! DAMAI BESERTAMU

90 X 72,2CM

WATERCOLOUR, COLOUR PENCIL, AND ACRYLIC ON PAPER

2019



NATASHA LUBIS

DEVOTION

65 X 80CM

ACRYLIC ON CANVAS

2020

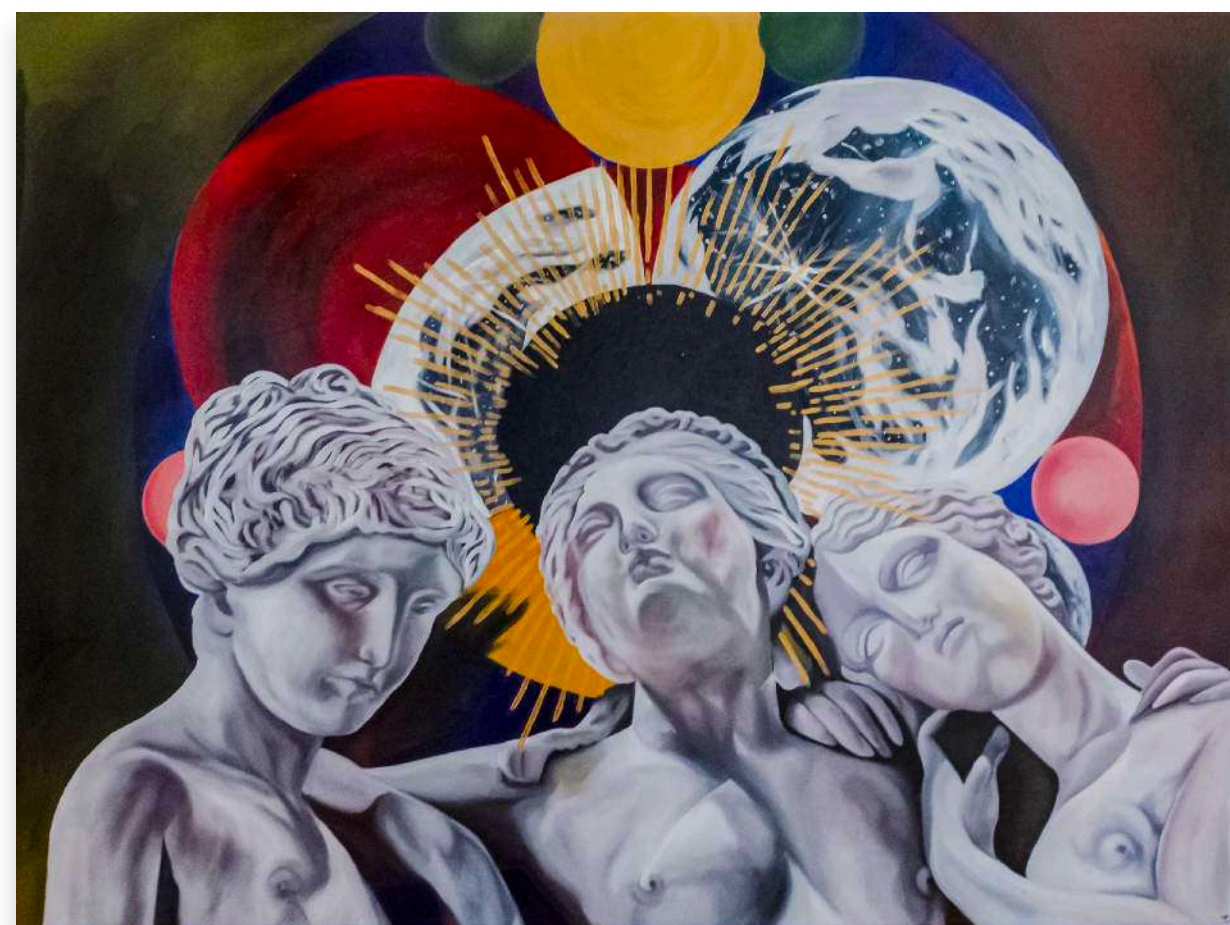


ELLA WIJT
BLUE POPPY

140 X 140CM

DERMATOGRAPH, ACRYLIC PAINT, DRIED FLOWERS AND

2019

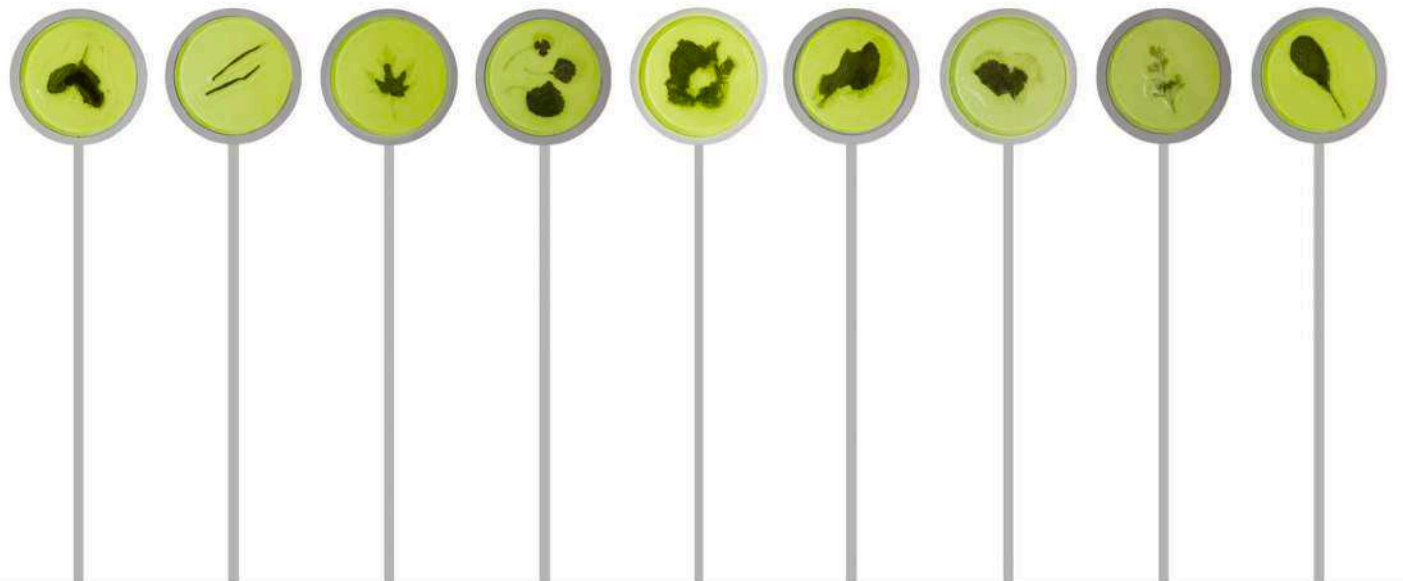


TALITHA MARANILA
FALSE FAITH

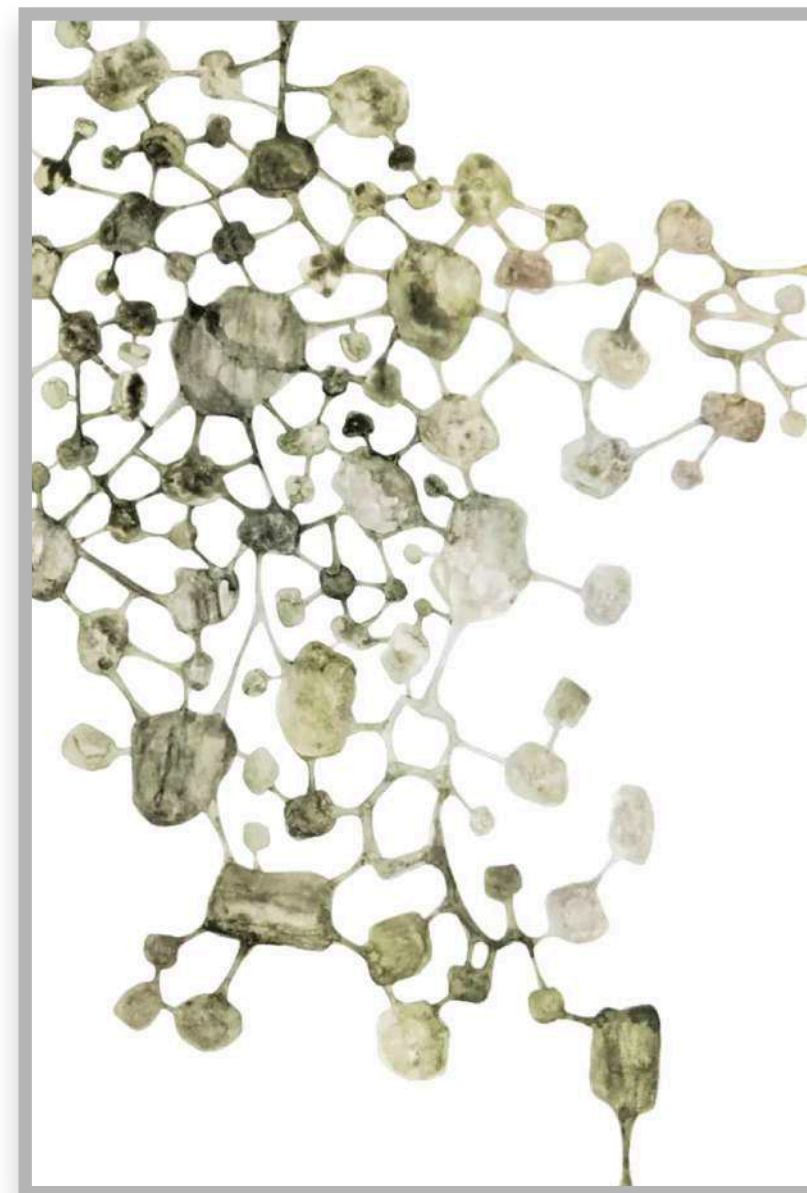
119 X 150CM

ACRYLIC ON CANVAS

2018



PATRICIA UNTARIO
THANK YOU VEGETABLE
 D=20 CM (9 PIECES)
 PLANTS IN FRAMED GLASSES WITH LED LIGHTS
 2019



CLAUDIA DIAN
SELF CONSTELLATION SERIES #1
 65 X 95CM
 WATERCOLOUR ON PAPER
 2019



ISA ART AND DESIGN

Jl Wijaya Timur Raya No. 12
Kebayoran Baru 12170
Jakarta, Indonesia

CONTACTS:

Email: gm@isaartanddesign.com

Telephone: (021) 7233905

WA: +(62) 811-1733-553

VISITING HOURS

Monday to Friday : 9am - 6pm

Saturday and Sunday : (Appointments only)

Social Media

Instagram: [@isaart.id](https://www.instagram.com/isaart.id)

<https://www.isaartanddesign.com/>

<https://web.facebook.com/isaartanddesign/>

GALLERY PROFILE

ISA Art & Design is a pioneer amongst its contemporary, establishing its presence in the form of both online and offline gallery. With outstanding public art consultancy portfolio built since 2013, ISA Art & Design decisively open a dedicated exhibition space focusing on supporting emerging and established female artists as well as new media art forms. Not only dealing in the primary art market, ISA Art & Design also works closely with collectors and institutions to help move the secondary art market, creating a wide and varied repository.

The ISA Art& Design gallery exclusively represents world-renowned artists; Sinta Tantra (UK), Aaron Taylor Kuffner (US) and Arahamaiani (ID) and are continuing to expand our stable of artists. With the connection to prestigious institutions such as The World Trade Centre, ISA has the capacity and competence to give our artists highly impactful exposure to the public realm.